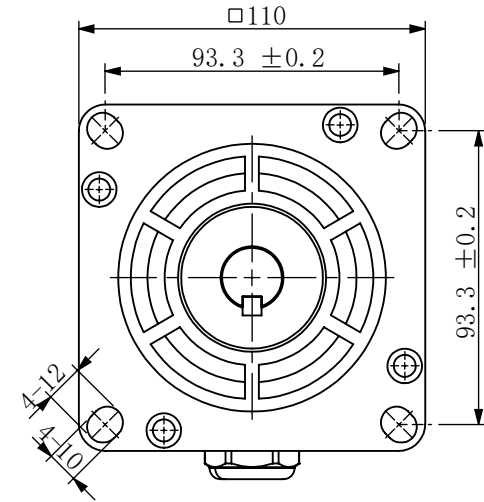
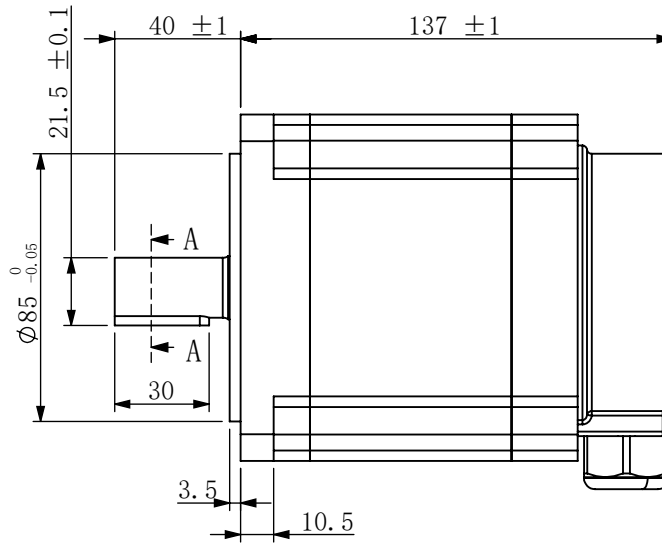
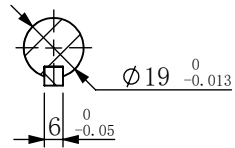
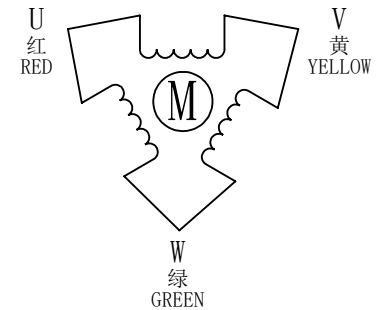


剖面 A-A



接线图/WIRING DIAGRAM



接地：黄绿双色线

电机特性参数/ELECTRICAL PARAMETER

步距角/STEP ANGLE	1.2° ±5%
相数/NO. OF PHASES	3
额定电压/RATED VOLTAGE	4.3V
额定电流/RATED CURRENT	4.3A
电阻/RESISTANCE	1.0ohm±10% AT25°C
电感/INDUCTANCE	11.9mH±20% AT 1kHz, 1Vrms
保持力矩/HOLDING TORQUE	8.0N.m
运行力矩/(AT —PPS) RUNNING TORQUE(AT —PPS)	——以上/MIN (——V.DC, ——A/相(PHASE), ——相励磁/EX)
绝缘耐压/DIELECTRIC STRENGTH	1500V A.C 1分钟/MINUTE
绝缘电阻/INSULATION RESISTANCE	100MΩ 以上/MIN.
绝缘等级/INSULATION CLASS	CLASS B
温度上升/TEMPERATURE RISE	80K MAX.
转子惯量/ROTOR INERTIA	8.6kg. cm <sup>2</sup>
重量/WEIGHT	约5.5kg /APPROX. 克/g
运行环境温度/OPERATION AMBIENT TEMP.	-20°C——+50°C
运行环境湿度/OPERATION AMBIENT HUM.	15%——90%

已受控

CONFIRMED&ACCEPTED BY COTUMER (客户确认&接受)									
COMPANY CHOP&SIGNATURE (盖章&签名)									
一般公差 TOLERANCE	±0.3/±3°	版本 REV.	年月日 DATE	变更番号 ECR NO.	变更内容 REVISIONS	设计 BY	备注 NOTE	REV.	A
设计/DESIGNED	陈少卿	比例 SCALE	型号/MODEL		110BM80-V2.0		三维图 THIRD ANGLE PROJECTION		
审核/CHECKED	潘国强	单位 UNIT	mm		深圳锐特机电技术有限公司		页 SHEET	1/1	

备注(NOTE):

1. 额定电流，两相同时通电/AT RATED CURRENT, TWO PHASES ON.
2. 热阻法：电机安装在84\*84\*T5的铝板上，电机线圈两端通额定电压，OPPS /MEASURED BY RESISTANCE METHOD. MOUNT WITH ALUMINUM HEAT SINK 84\*84\*T5 AT TWO WINDING BE EXCITED BY RATED VOLTAGE, OPPS, 2PHASE ON.
3. 寿命测试条件：整步，运行速度为500PPS，轴承的表面温度不超过70° C LIFE TEST CONDITION: 2PHASE EXCITING, FULL STEP, AT 500PPS. STARTING PULSE, BEARING TEMPERATURE SHOULD BE 70° C MAX.