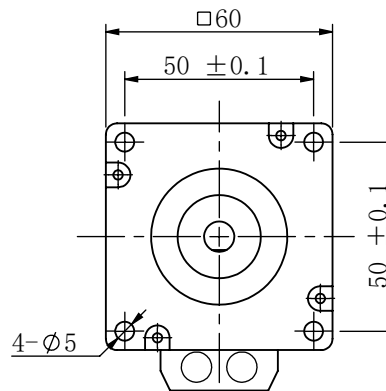
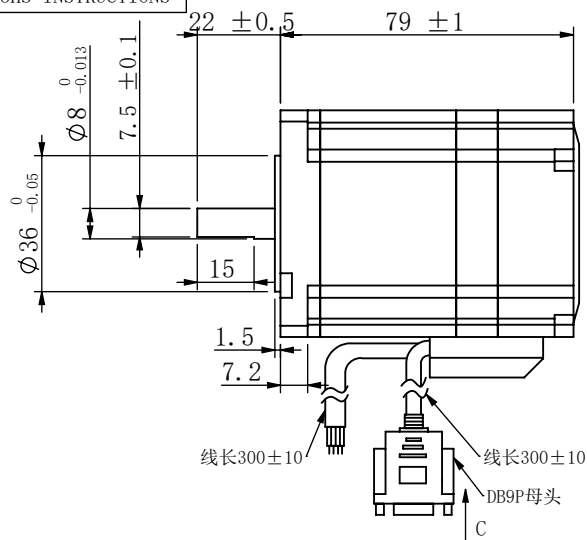
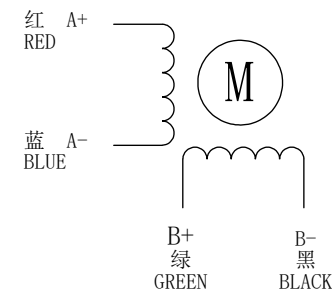


符合RoHS指令要求  
CONFORM TO RoHS INSTRUCTIONS

图号/DWG NO.  
60HSM58D-D0822-013



接线图/WIRING DIAGRAM

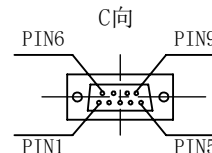


电机特性参数/ELECTRICAL PARAMETER

|   |   |
|---|---|
| 步距角/STEP ANGLE                            | 1.8° ±5%                                      |
| 相数/NO. OF PHASES                          | 2   |
| 额定电压/RATED VOLTAGE                        | 1.75V   |
| 额定电流/RATED CURRENT                        | 5.0A  |
| 电阻/RESISTANCE                             | 0.35ohm±10% AT25°C                            |
| 电感/INDUCTANCE                             | 1.30mH±20% AT 1kHz, 1Vrms                     |
| 保持力矩/HOLDING TORQUE                       | 2.2N.m  |
| 运行力矩/(AT —PPS)<br>RUNNING TORQUE(AT —PPS) | ——以上/MIN<br>(——V. DC, ——A/相(PHASE), ——相励磁/EX) |
| 绝缘耐压/DIELECTRIC STRENGTH                  | 500V A.C 1分钟/MINUTE                           |
| 绝缘电阻/INSULATION RESISTANCE                | 100MΩ 以上/MIN.                                 |
| 绝缘等级/INSULATION CLASS                     | CLASS B                                       |
| 温度上升/TEMPERATURE RISE                     | 80K MAX.                                      |
| 转子惯量/ROTOR INERTIA                        | 330g.cm <sup>2</sup>                          |
| 重量/WEIGHT                                 | 约/APPROX. 1010克/g                             |
| 允许轴向负载/ALLOWABLE THRUST LOAD              | 5N  |
| 允许径向负载/ALLOWABLE RADIAL LOAD              | 30N(轴端/ON THE SHAFT END)                      |
| 运行环境温度/OPERATION AMBIENT TEMP.            | -20°C——+50°C                                  |
| 运行环境湿度/OPERATION AMBIENT HUM.             | 15%——90%                                      |

备注(NOTE):

1. 额定电流, 两相同时通电/AT RATED CURRENT, TWO PHASES ON.
2. 热阻法: 电机安装在84\*84\*T5的铝板上, 电机线圈两端通额定电压, OPPS /MEASURED BY RESISTANCE METHOD. MOUNT WITH ALUMINUM HEAT SINK 84\*84\*T5 AT TWO WINDING BE EXCITED BY RATED VOLTAGE, OPPS, 2PHASE ON.
3. 寿命测试条件: 整步, 运行速度为500PPS, 轴承的表面温度不超过70° C LIFE TEST CONDITION: 2PHASE EXCITING, FULL STEP, AT 500PPS. STARTING PULSE, BEARING TEMPERATURE SHOULD BE 70° C MAX.



| 1000线光电编码器出线定义 |     |     |    |     |     |    |    |    |     |
|----------------|-----|-----|----|-----|-----|----|----|----|-----|
| 序号             | 1   | 2   | 3  | 4   | 5   | 6  | 7  | 8  | 9   |
| 定义             | EA+ | EA- | NC | EB+ | EB- | NC | NC | 5V | GND |
| 线色             | 棕   | 白   | \  | 绿   | 黄   | \  | \  | 红  | 蓝   |

励磁顺序(2相励磁) VS. 旋转方向  
EXCITING SEQUENCE(TWO PHESSES)  
VS. DIRECTION OF ROTATION

|    |      |    |    |    |     |
|----|------|----|----|----|-----|
|    | STEP | A+ | B+ | A- | B-  |
| CW | 1    | +  | +  | -  | -   |
|    | 2    | -  | +  | +  | -   |
|    | 3    | -  | -  | +  | +   |
|    | 4    | +  | -  | -  | +   |
|    |      |    |    |    | CCW |

从安装面看为顺时针方向  
CLOCKWISE VIEW FROM MOUNTING SIDE

已受控

|  |          |             |             |                 |                   |          |         |            |                                  |
|--|----------|-------------|-------------|-----------------|-------------------|----------|---------|------------|----------------------------------|
| CONFIRMED&ACCEPTED BY COTUMER<br>(客户确认&接受) |          |             |             |                 |                   |          |         |            |                                  |
| COMPANY CHOP&SIGNATURE<br>(盖章&签名)          |          |             |             |                 |                   |          |         |            |                                  |
| 一般公差<br>TOLERANCE                          | ±0.3/±3° | 版本<br>REV.  | 年月日<br>DATE | 变更番号<br>ECR NO. | 变更内容<br>REVISIONS | 设计<br>BY | 备注 NOTE | REV.       | A                                |
| 设计/DESIGNED                                | 张丁卿      | 比例<br>SCALE |             | 型号/MODEL        | 60AM22ED          |          |         |            | 三维图<br>THIRD ANGLE<br>PROJECTION |
| 审核/CHECKED                                 |          | 单位<br>UNIT  | mm          | 深圳锐特机电技术有限公司    |                   |          |         | 页<br>SHEET | 1/1                              |