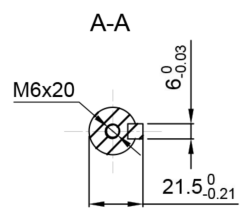


1 2 3 4 5 6 7 8

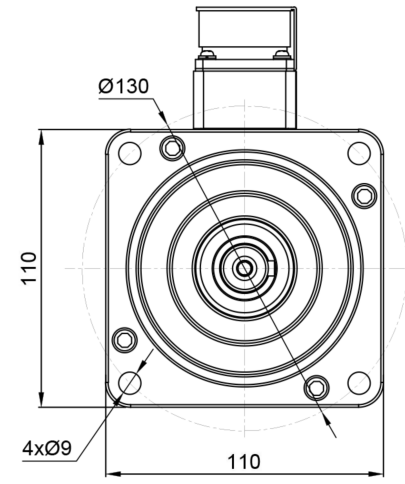
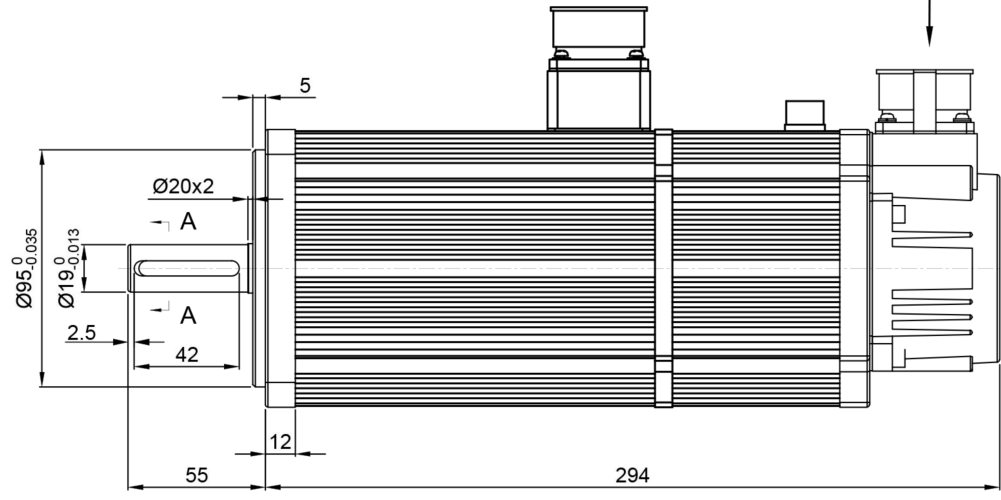
A



B

C

D



Technical data

Number of poles	8	P
Rated power	1800	W
Rated voltage	220	V/AC
Rated current	6	A
Rated speed	3000	rpm
Rated torque	6	N.m
Peak torque	18	N.m
Back EMF	60	V/1000r/min
Torque coefficient	1	N.m/A
Rotor inertia	0.76×10^{-3}	KG.M ²
Wire resistance	0.81	Ω
Wire inductance	2.59	mH
Electrical time constant	3.2	ms
Weight	8.4	KG
Brake rated voltage	24	VDC
Brake rated power	17.5	W
Brake static torque	8	N.m
Encoder type	17bit single-turn magnetic absolute encoder	
Motor insulation class	Class F	
Protection class	IP65	
Use environment	Ambient temperature: -20°C~+40°C, ambient humidity <90% (no frost condition)	

零件代号

借(通)用件登记

电机绕组连接线顺序

信号引线	PE	U	V	W
插座编号	1	2	3	4

描图

描校

旧底图总号

底图总号

签字

日期

绝对值编码器连接线7芯

信号引线	PE	E-	E+	SD-	0V	SD+	+5V
插座编号	1	2	3	4	5	6	7

1

2

3

4

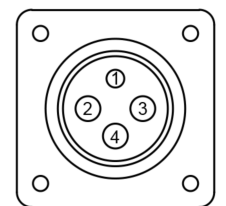
5

6

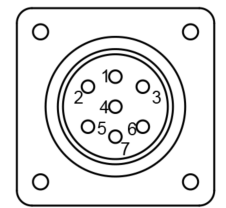
7

8

动力线航空插头(P向)



绝对值编码器插头(Q向)



版本	更改文件名	变更时间	变更人	变更内容
设计	签名	年月日	图纸大小	质量
审核			A3	
工艺			材料	
批准			共1张 第1张	版本 01
				名称
				RTELLIGENT
				图号
				RSM-M11J6030A-Z

A

B

C

D

E

F